



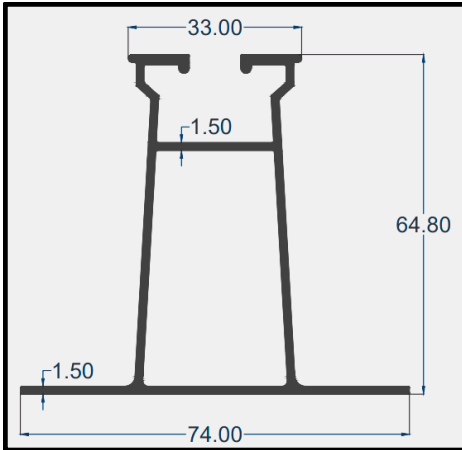
Maheshwari Co.



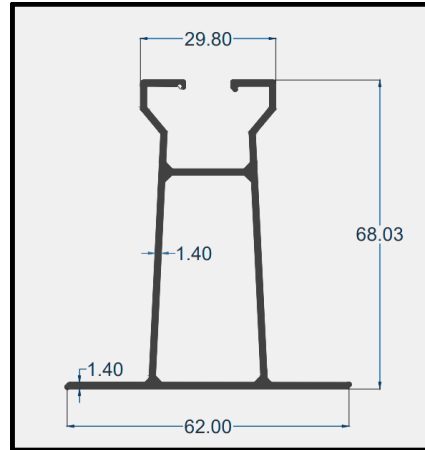
QUALITY PRODUCTS SINCE 1966

MAHESHWARI CO.

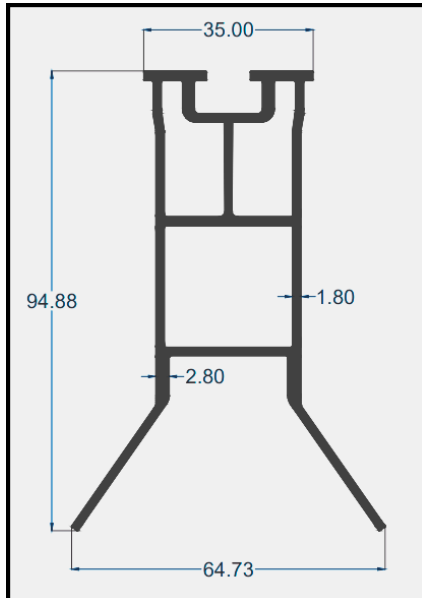
SOLAR STRUCTURES



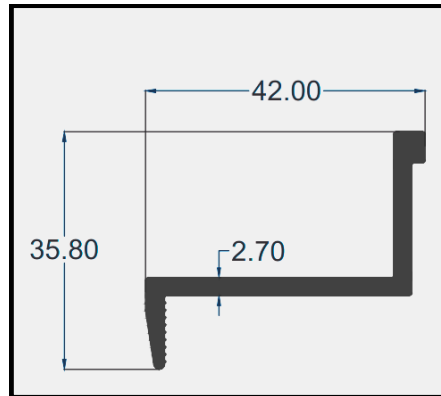
SECTION NO	MA1201
WEIGHT	3.8-4.15KG(12')



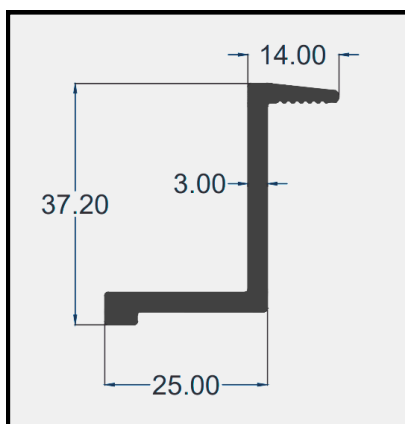
SECTION NO	MA1202
WEIGHT	3.33-3.55KG(12')



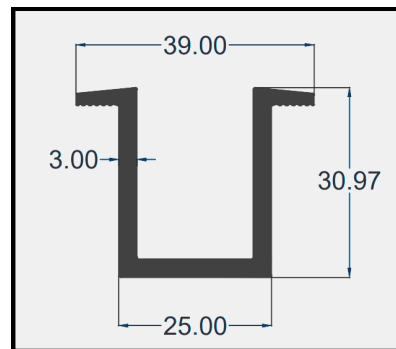
SECTION NO	MA1203
WEIGHT	6.08-6.27KG(12')



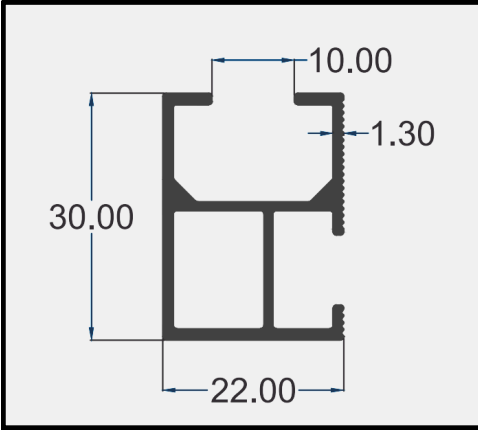
SECTION NO	MA1204
WEIGHT	2-2.2KG(12')



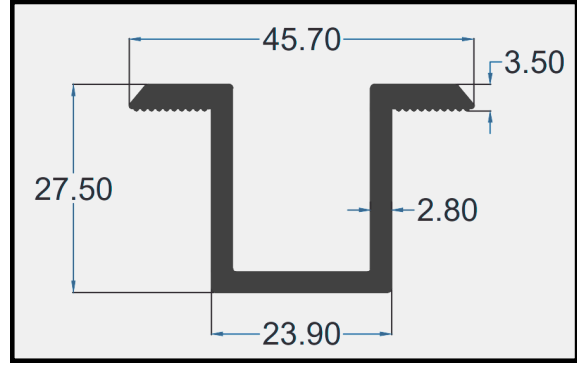
SECTION NO	MA1205
WEIGHT	2.03-2.27KG(12')



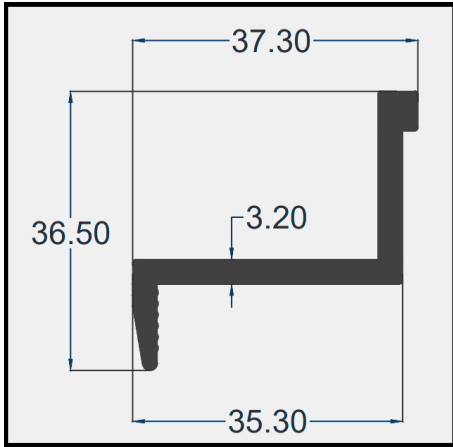
SECTION NO	MA1206
WEIGHT	2.7-2.95KG(12')



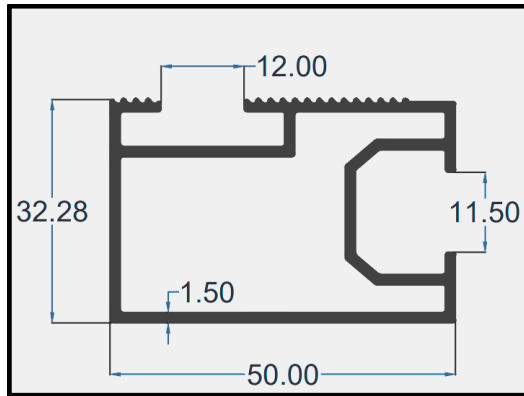
SECTION NO	MA1207
WEIGHT	1.48-1.69KG(12')



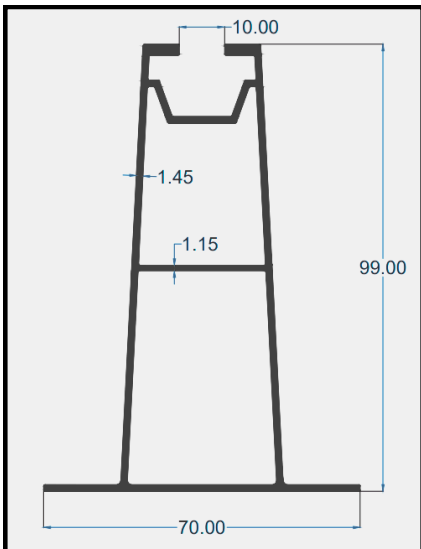
SECTION NO	MA1217
WEIGHT	2.66-2.8KG(12')



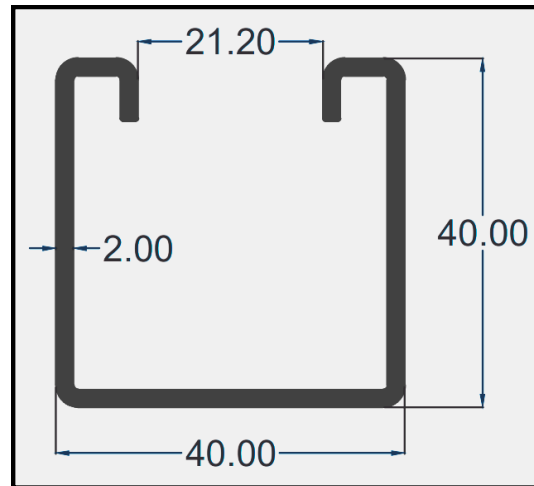
SECTION NO	MA1218
WEIGHT	2.21-2.41KG(12')



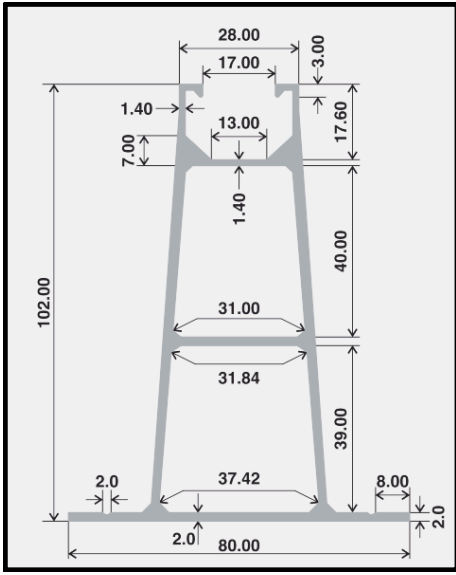
SECTION NO	MA1222
WEIGHT	3.07-3.21KG(12')



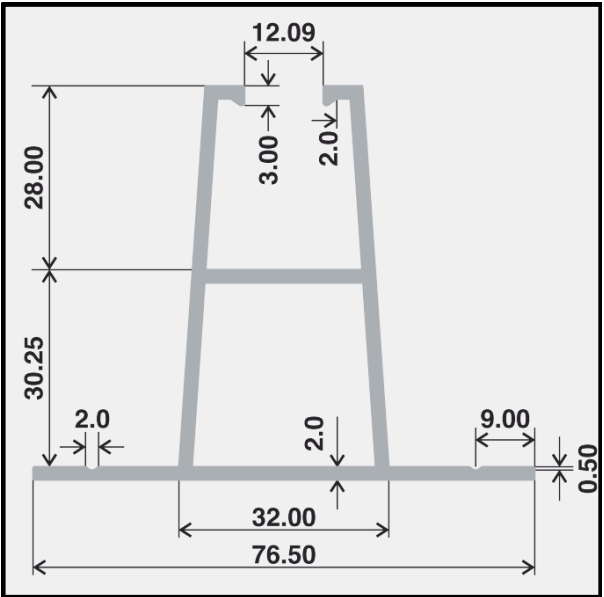
SECTION NO	MA1223
WEIGHT	4.95-5.1KG(12')



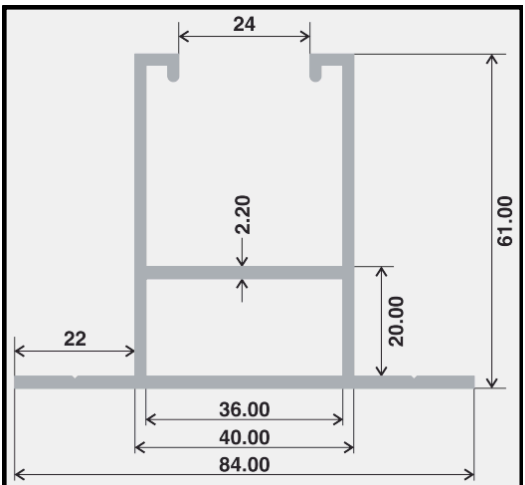
SECTION NO	MA1225
WEIGHT	2.7-2.9KG(12')



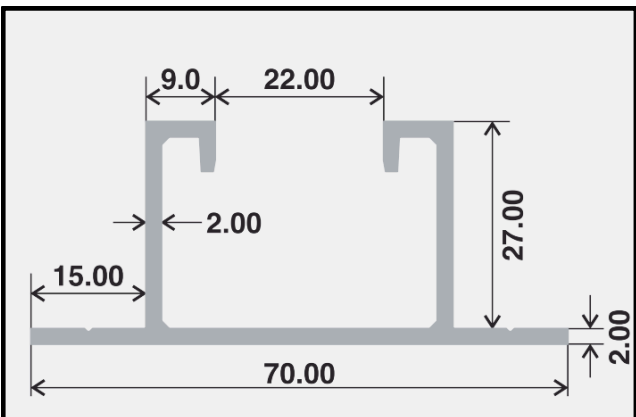
SECTION NO	MV1236
WEIGHT	7.15-7.45KG(12')



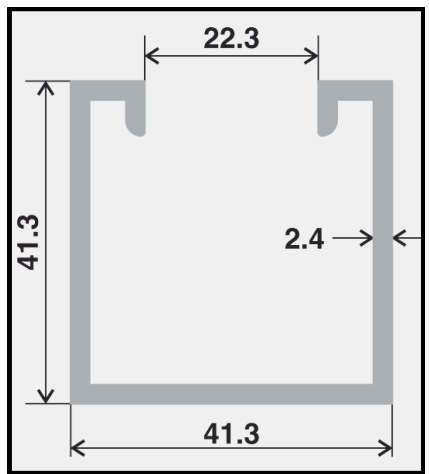
SECTION NO	MV1239
WEIGHT	4.35-4.65KG(12')



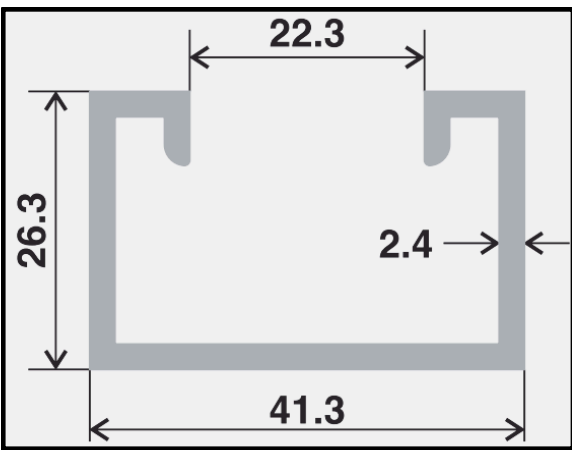
SECTION NO	MV1240
WEIGHT	5.35-5.65KG(12')



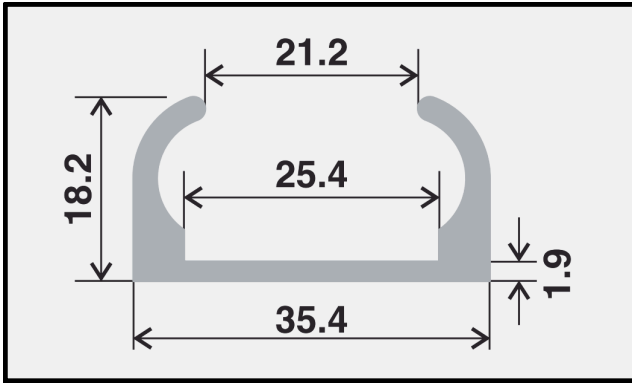
SECTION NO	MV1241
WEIGHT	2.85-3.2KG(12')



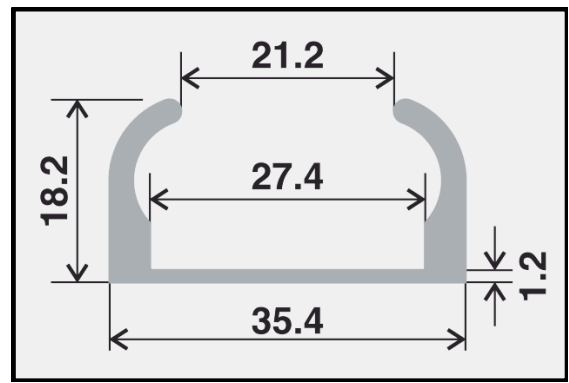
SECTION NO	MV1242
WEIGHT	3.3-3.65KG(12')



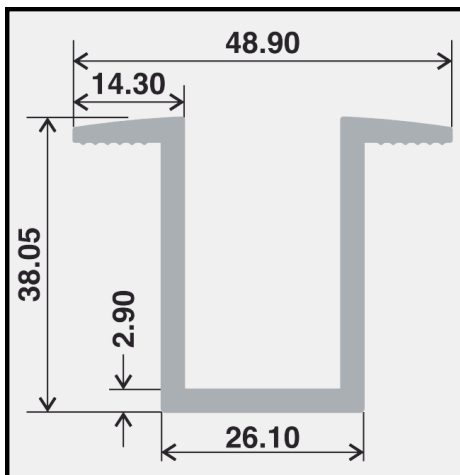
SECTION NO	MV1243
WEIGHT	2.65-3.1KG(12')



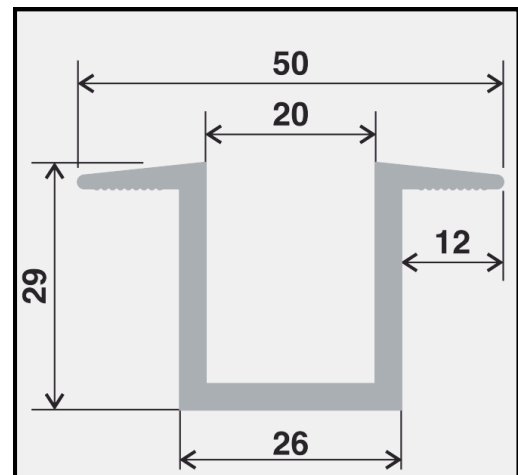
SECTION NO	MV1244
WEIGHT	1.7-1.9KG(12')



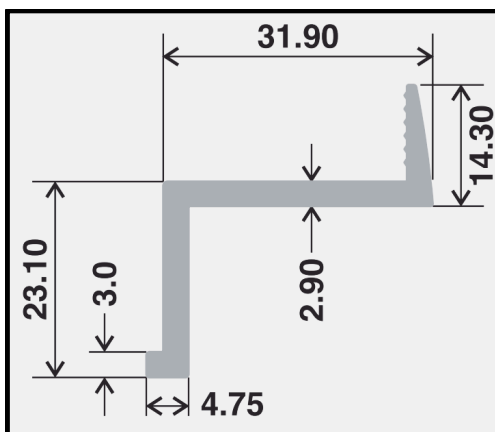
SECTION NO	MV1245
WEIGHT	1.45-1.65KG(12')



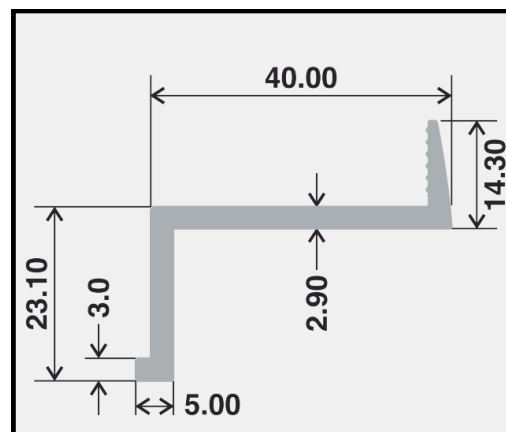
SECTION NO	MV1246
WEIGHT	2.85-3.15KG(12')



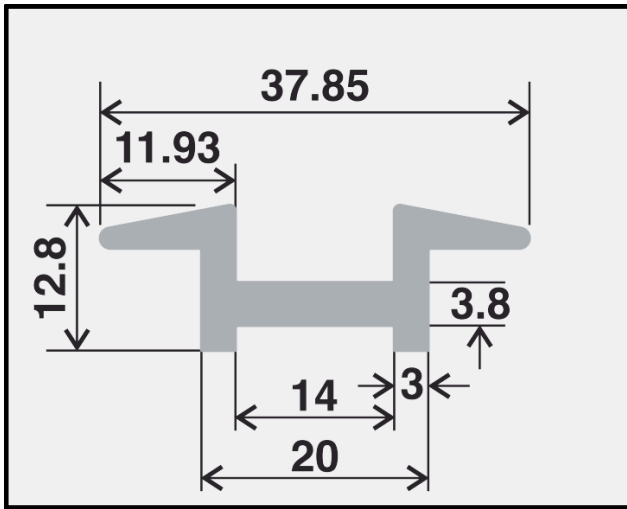
SECTION NO	MV1247
WEIGHT	2.65-2.95KG(12')



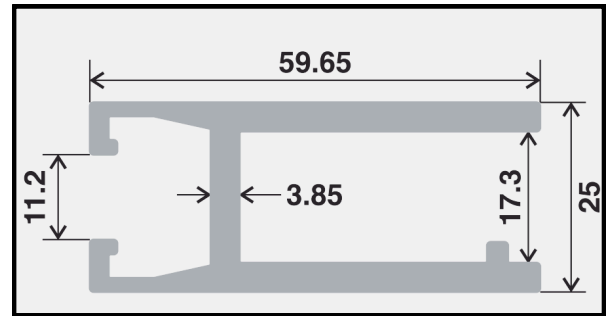
SECTION NO	MV1248
WEIGHT	1.85-2.1KG(12')



SECTION NO	MV1249
WEIGHT	1.9-2.2KG(12')

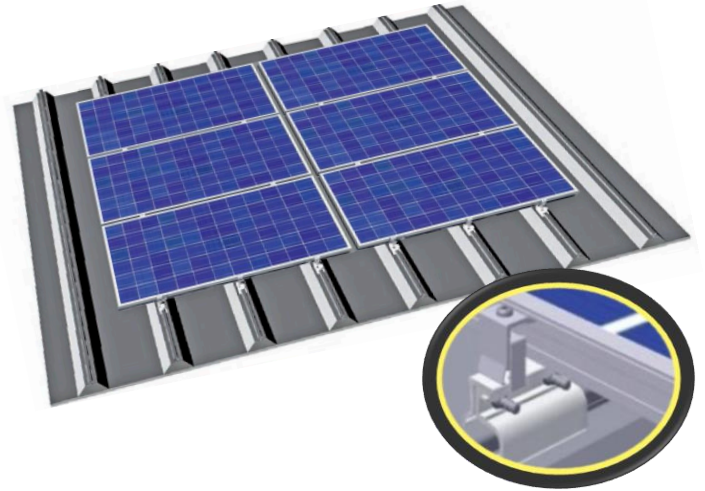
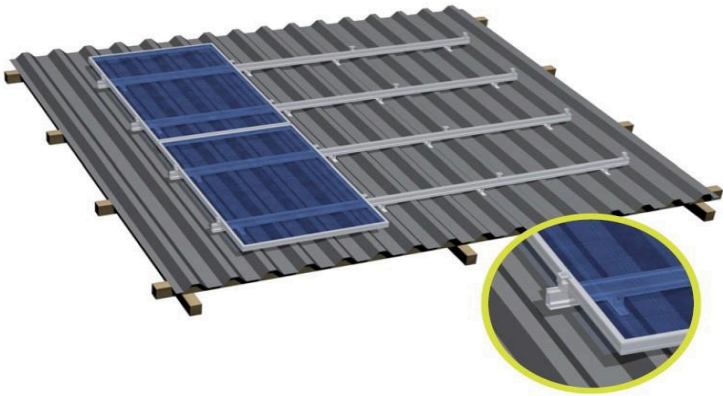


SECTION NO	MV1250
WEIGHT	1.65-1.85KG(12')



SECTION NO	MV1252
WEIGHT	4.8-5.2KG(12')

Mounting Structure for Trapezoidal, Corrugated and Standing Seam Roof Sheets



Trapezoidal Metal Rail
Part No: R2425/129



ST- Trapezoidal Metal Rail
Part No: R2425/149

Rectangular Base Rail Part
No: R2425/131



ST-AK 5/40 Rail
Part No: R2425/157

Mid Clamp
Part No: C2425/127



End Clamp
Part No: C2425/128

Locking Clip
Part No: C2425/145



Angle Bracket 40
Part No: C2425/137

Standing Seam Roof Clamp
Part No: C2425/152



Application:

Trapezoidal, Corrugated and Standing Seam metal sheets

Fastening:

Riveting or Self drilling screws

Module Types:

Framed or Frameless modules

Module Orientation:

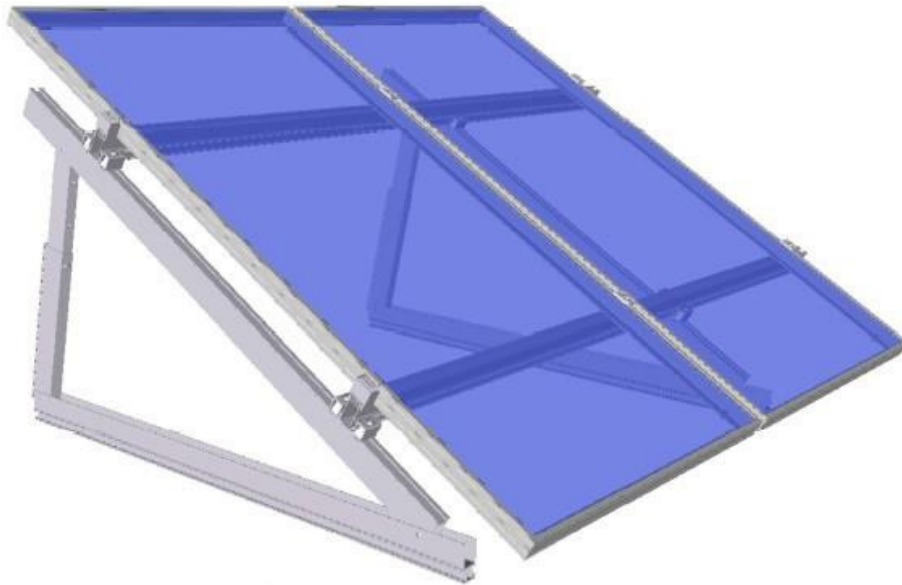
Landscape / Portrait

Product Features:

- Light weight
- EPDM layer at the bottom for water proofing
- Supplied with prefabricated holes to ease installation
- Loads transferred to Purlin
- Height Adjustable
- Non penetrative solution
- Easy to Install

Mounting Structure for Flat Roofs

Adjustable tilt angles for enhanced efficiency, without roof penetration.



Triangle 10°-15°
Part No: T2425/134



ST-AK 19/66 Rail
Part No: R2425/106

Cross Adaptor
Part No: A2425/126



End Clamp
Part No: C2425/128

Mid Clamp
Part No: C2425/127



Application:

Flat Roofs

Pitch:

Adjustable in increments in of 5°
3 variations: 10°-15°, 20°-30°, 35°-45°

Module Types:

Framed or Frameless modules

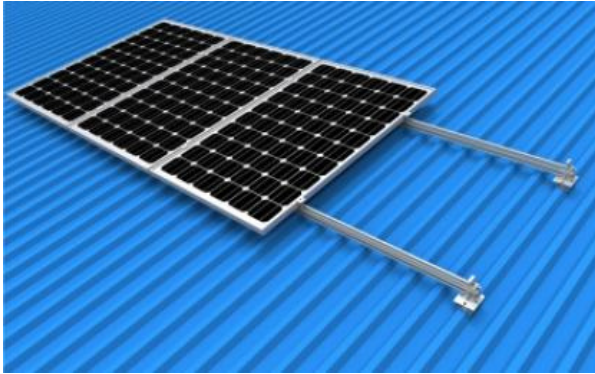
Module Orientation:

Landscape

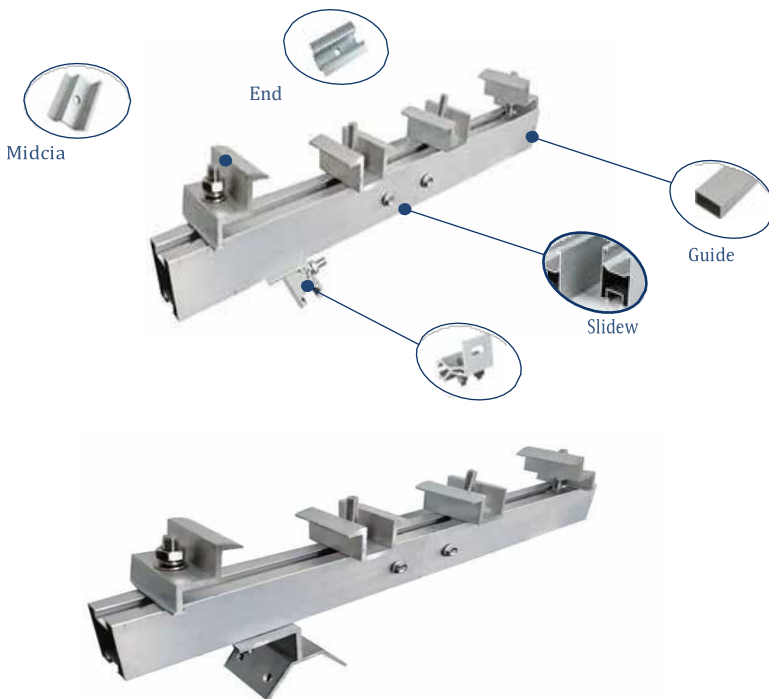
Product Features:

- Tilt angle can be customized based on location
- Seasonal tilt to improve generation efficiency
- No roof penetration

GUIDEWAY COLOR STEEL TILE SYSTEM



The Guided Color Steel Tile Photovoltaic Racking System is primarily designed for large-area upright edge-locked and angle-chip color steel tile roofs, such as those found on factories or warehouses. This system utilizes aluminum alloy rails connected to color steel tile roof fixtures to support the solar modules. The modules are secured on the rails using middle side pressure blocks, ensuring a simple yet durable structure. The guided design enhances stability and installation efficiency. These may be different for different troughed sheet as shown below.



Main Components



Product Description

Installation sites	Color Steel Tile Roofing	Applicable Components	Framed or unframed
Maximum wind speed	45m/s	Applicable arrangement service life	Horizontal/vertical
Maximum snow pressure	0.5kn/m		>20 years

NON-GUIDEWAY COLOR STEEL TILE SYSTEM



The Non-Guide Rail Color Steel Tile Photovoltaic Racking System is primarily designed for distributed color steel tile roofs. This system utilizes a self-contained guide groove fixture, eliminating the need for guide rails. Photovoltaic modules are secured to the integrated fixture using pressure blocks. It is lightweight, adding almost no extra load to the roof.



One-piece fixture

Midciamp

Endclamp

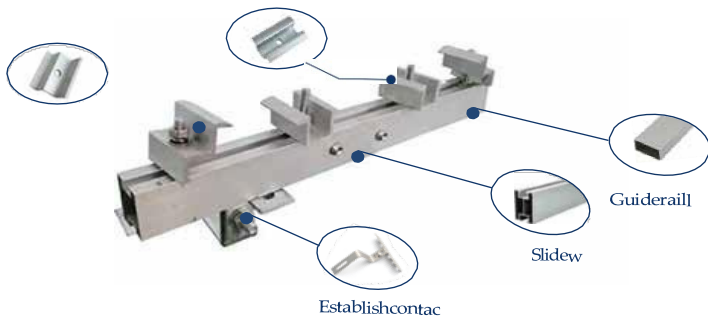
Product Description

Maximum wind speed	45m/s	Installation site	Color Steel Tile Roofing
Maximum snow pressure	0.8kn/m'	Staple	Fastener materials
Applicable Span range	0.1-1.5m	Applicable Components	Framed or unframed
service life	>20 years	Applicable arrangement	Horizontal/vertical

PORCELIAN TILE ROOF BRACKET SYSTEM



The Porcelain Tile Roof Bracket System is designed for maximum flexibility, making it ideal for both framed and frameless components mounted on sloped roof systems. Its innovative rail and D-block design simplifies and speeds up the installation process. The system comes highly pre-assembled and offers customized solutions to significantly reduce your installation time and costs.






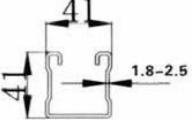
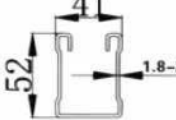
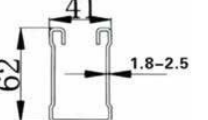
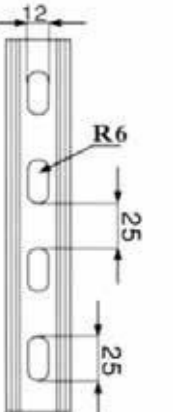
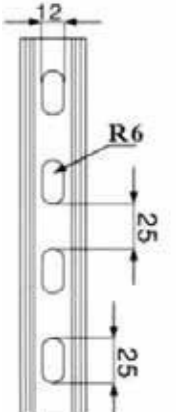
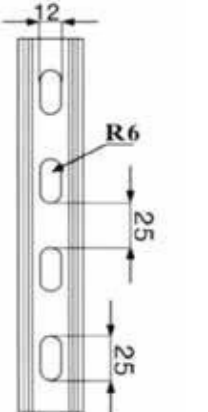
Product Description

Installation sites	Tile roof
Applicable Components	Framed or unframed
Specificities	Modules mounted parallel to the roof or with an inclined angle; Unique connection design, easy and quick installation; Simple and versatile installation tool;
Service life	>20 years

ZINC-ALUMINUM-MAGNESIUM PHOTOVOLTAIC RACKING

Zinc-Aluminum-Magnesium photovoltaic mounts are made from ternary alloy plating materials. As defined by European standard EN10346-2015, this plating consists primarily of zinc, with aluminum and magnesium content ranging from 1.5% to 8%, and magnesium content of at least 0.2%. Compared to traditional coatings like hot-dip galvanized, galvanized aluminum, and zinc-iron alloy, the Zinc-Aluminum-Magnesium coating offers significantly better corrosion resistance.



C/U Steel Aluminum Alloy Guide Rail	Material:S350GD Material: 6063T5	Surface Treatment: Zinc Aluminum Magnesium Surface Treatment: Oxidation
		
		
		

FLAT ROOF BRACKING SYSTEM



The Zinc-Aluminum-Magnesium bracket system is ideal for use on expansive horizontal ground. Constructed from zinc-aluminum-magnesium, the bracket system is exceptionally stable and resistant to wind and snow. Depending on the foundation requirements, the bracket system can be secured to a concrete foundation with pre-buried ground bolts or directly anchored to the ground using screw ground piles. This system boasts a flexible design, offers diversified outcomes, and is widely applicable. It can be configured for single or double row installations, catering to various needs and conditions.

Installation site	Concrete flat roof or level floor
staple	Zinc-aluminum-magnesium zinc infiltration and stainless steel standard parts Aluminum Components
Applicable Components	Framed or unframed
Installation	Pre-embedded anchor bolts on mounting surface, or similar concrete foundation
Product Features	Design the mounting angle according to the actual need; No damage to the original waterproof layer, no need for waterproof treatment; Simple and versatile installation tools;.
Useful life	Not less than 20 years



Triangle connector



Photovoltaic mounting base



PV Racking Rear Column



PV Racking Beam



U-shaped guide rails



RailspliceKit



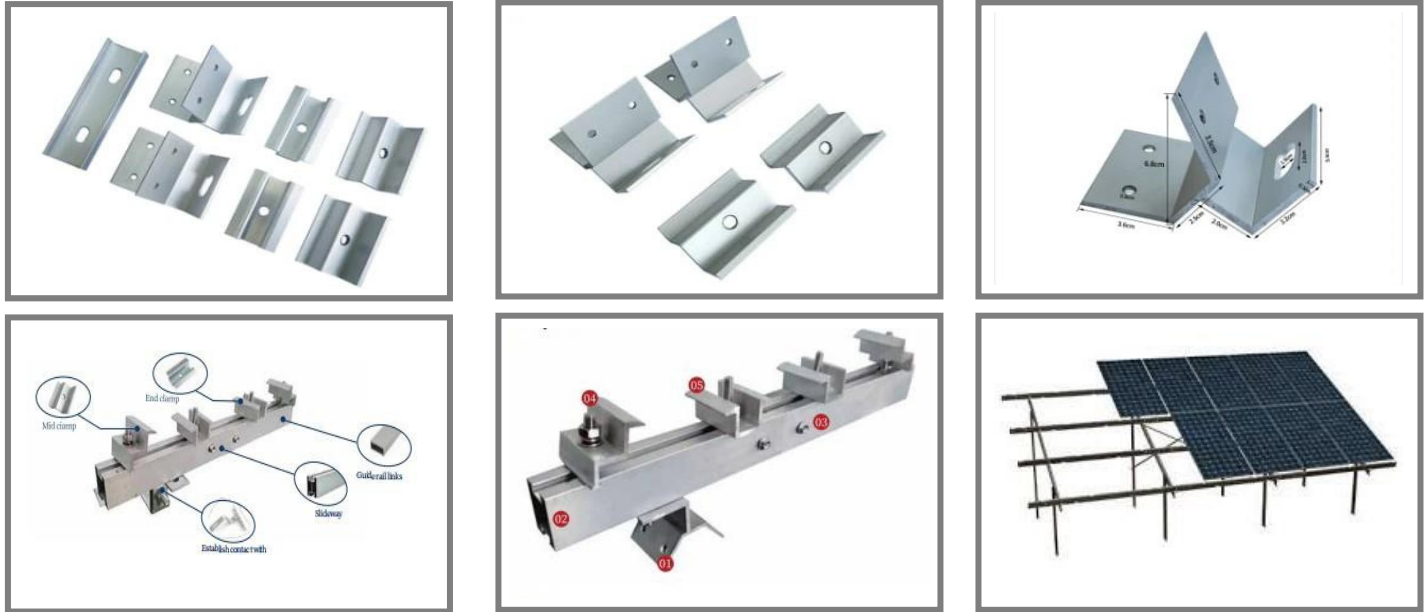
Midciamp



Endclamp

MANUFACTURING & QUALITY

While we source materials from trusted manufacturers, Maheshwari Co maintains stringent quality controls to ensure that only the finest products reach you. Our commitment to quality extends from sourcing to distribution, ensuring reliability and performance in every product.



CONTACT US

Maheshwari Co

Office - 5/2, Rajnigandha Building.
D.B. Gupta Road, Paharganj, New Delhi-110055
Phone : +91-9891300031 ,
Email : bkbhuraria@hotmail.com